

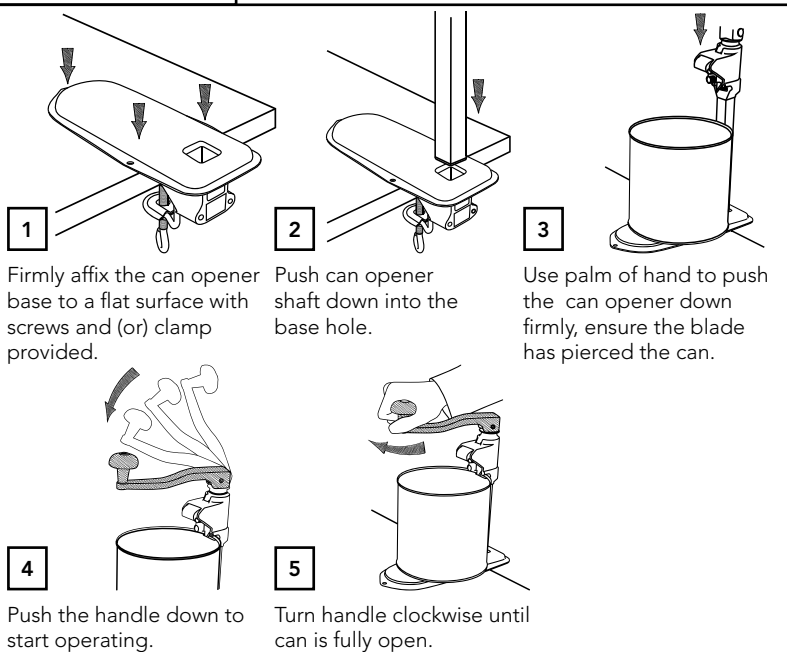
CAN OPENER WALL GUIDE

Maintain the great performance of your Bonzer® Can Opener

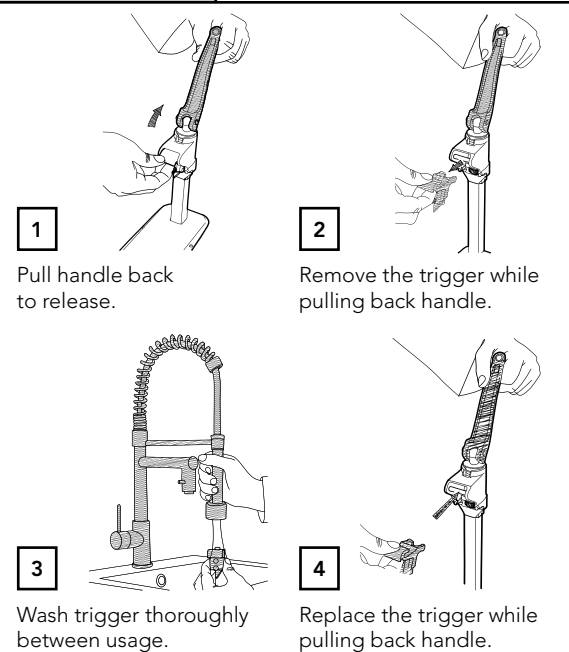


Bonzer® Can Openers are lovingly made in the UK at Mitchell & Cooper's factory in East Sussex. Build to last, the Bonzer® Can Openers have been manufactured since 1930s.

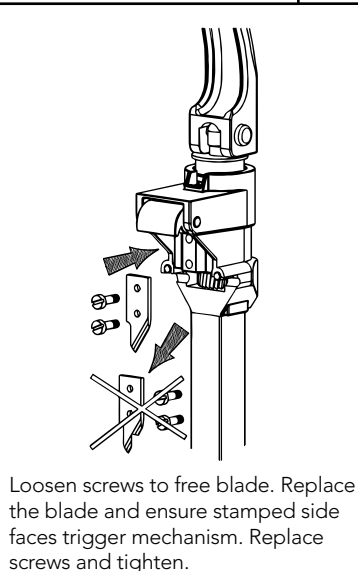
OPERATING



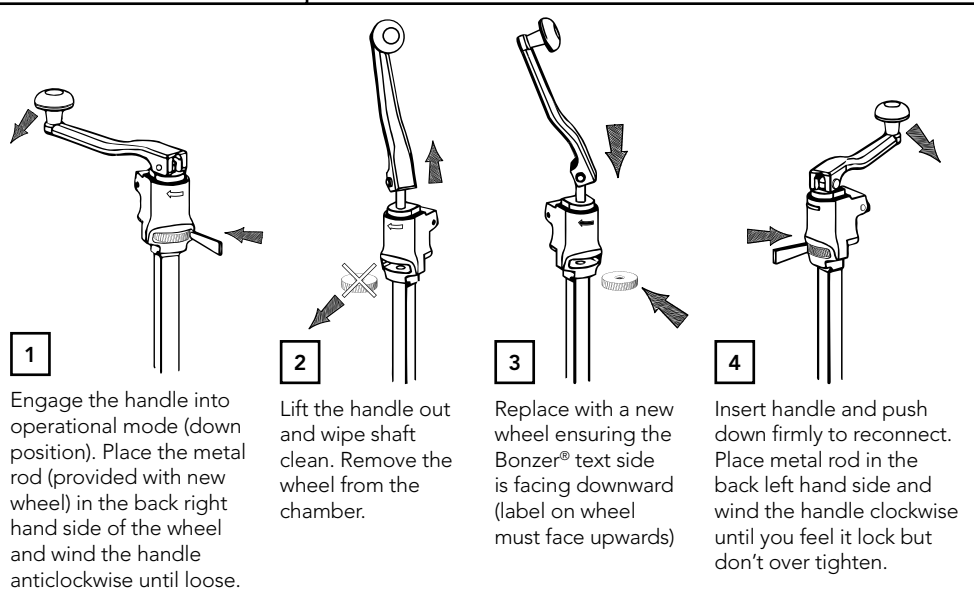
CLEANING



BLADE FITTING



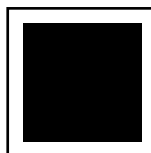
WHEEL FITTING



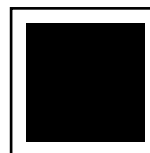
TIPS & TROUBLESHOOTING

- ✓ Open the tops of cans not the bottoms, store cans such as beans upside down.
- ✓ Open dented cans from just to the left of the dent.
- ✓ Turn the handle clockwise - anticlockwise rotation could loosen the mechanism.
- ✓ Never turn the handle continually without a can in place.
- ✓ When replacing the can opener - change the base as well.
- ✓ Never sharpen the blade - sharp blades cause sharp edges.
- ✓ Replace chipped blades and wheel.

RESOURCES



Spares Shop & Maintenance
www.mitchellcooper.co.uk/spare-parts/can-opener-spare/



Extended Warranty
www.mitchellcooper.co.uk/Can-Opener-Registration