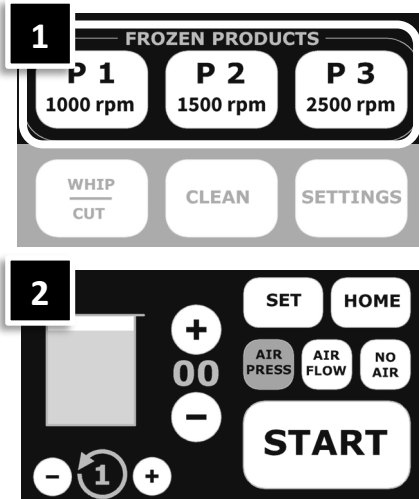


HotmixPRO EasyGIAZ

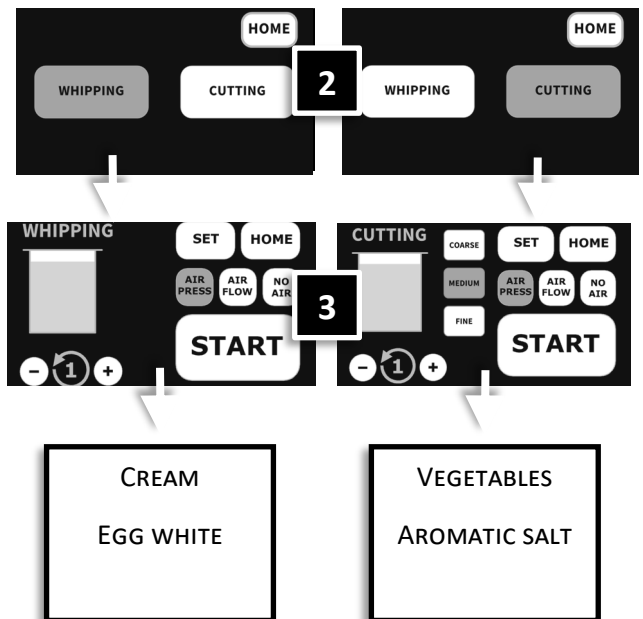
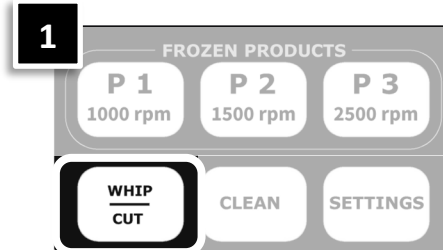
Quick start user guide

FROZEN PRODUCTS

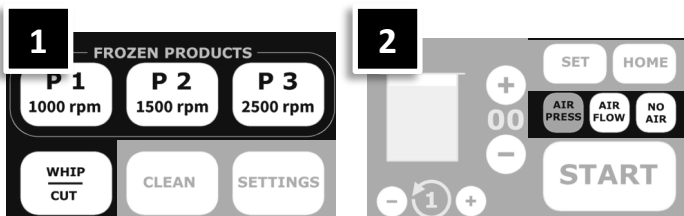


| P1 1000rpm | P2 1500rpm | P3 2500rpm |
|----------------------------------|---------------------------------------|--|
| - POWDERS - ROUGH TEXTURES | - SORBET - WATER BASED MIXTURES | - ICE-CREAM - FAT BASED MIXTURES |

FRESH PRODUCTS



AIR

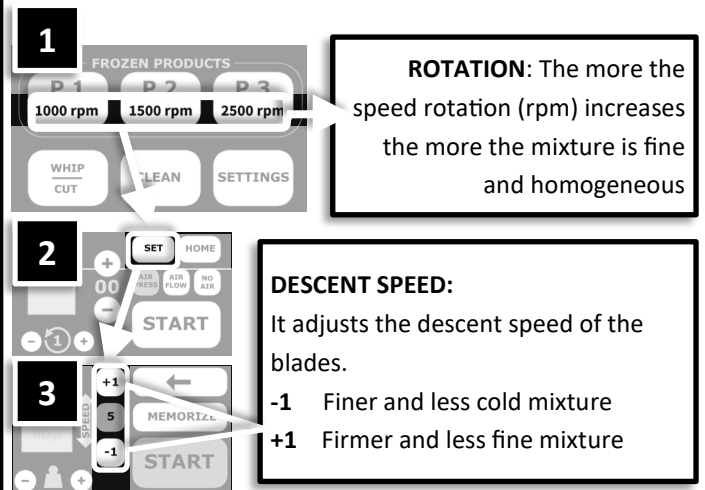


AIR PRESS For maximum expansion of the product. Recommended for **SORBET**.

AIR FLOW Air through the product. Recommended for **ICE-CREAM**.

NO AIR No added air into the product. Recommended for **POWDERS** and **SLUSH**.

SPEED AND ROTATION



CLEANING



NOTE

3. Remember to connect the drain hose to the rear nozzle and place it in a container for drainage.

AUTOMATIC CLEANING

FAST CLEANING PROCEDURE FOR QUICK BLADE WASHING

1



Fill the beaker with hot water until you reach the level, as indicated by the line.

2



Place the beaker in its handle and securely lock it on the machine by turning it from right to left.

3



Connect the supplied drain hose to the air nozzle and place it in a container to collect the water removed during cleaning process.

4



Start the program "CLEAN", following the steps indicated in the previous sheet.

DESCRIPTION



1

2

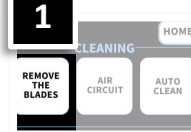
3

1. Handle
2. Locking Assembly
3. Fixing wings (left and right)

HOW TO REMOVE THE BLADES

DEEP CLEANING procedure to be done at the end of the service

1



Remove the handle (1) and the tray.
Select the program "**REMOVE THE BLADES**" from the **CLEANING** menu and follow the indication on the display.

2



Release the blades and the locking assembly (2) in order to clean them. Open the wings and remove the locking assembly (3).

3



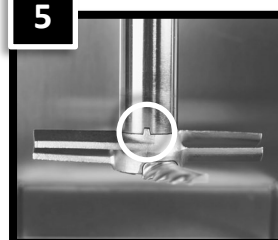
Clean and then grease with food lubricant the plate at the base of the blades' shaft.

4



Put back locking assembly (2) and blades (in this order) and then follow the instruction on the display so the shaft goes back into initial position.

5



While replacing the blades, **pay attention** to the central part (circled in white); it must be perfectly inserted into its hole

www.hotmixpro.com

Strada Contrada 271/4
41126 Modena - ITALY
Tel.: +39 059 4924149