



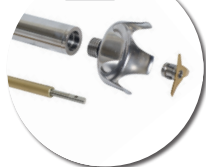
MASTER SERIES

COMBI 410

Ref : MF002.H



Clean up System



DESCRIPTION

- Safety button with rubber protection against moisture.
- Continuous function auto run button allows to mix continuously or pulse.
- Ergonomic design for easy handling and easy cleaning.
- Variable speed as standard.
- Higher ventilation point.
- Indicator light: for your safety the light indicates that the unit is plugged in and ready for operation.
- Stainless steel mixer tube, guard and whisks for easy cleaning and perfect hygiene.
- Titanium-plated blade easily dismantled without any special tool.
- Detachable tools : easy cleaning and maintenance and perfect hygiene.



USE

Mixer : Indispensable for the preparation of soups, salad dressings, gravies, sauces, mayonnaise, refried beans and many other applications.

Whisks : For easy preparation of batters, creams, mousseline sauces and whipped egg whites.

Capacity : 40 to 100 Liters (mixer) / 10 to 20 Liters (whisks)



MAINTENANCE

Clean the outside of the tube and the blade protector by passing it under the faucet.

Dismantle whisks from their attachments by pushing strongly on the cups, then you can securely rinse the whisks under running water.

Wash the motor block with a sponge or with a slightly damp cloth.

Never clean this machine with water jet spray or in the dishwasher.



TECHNICAL DATA

OUTPUT MAX	600 W
MIXER SPEED	3000 to 10500 R.P.M.
WHISKS SPEED	300 to 900 R.P.M.
VOLTAGE	110 - 120 V or 220 - 240 V
TOTAL LENGTH	720 mm
SHAFT LENGTH	410 mm
WHISKS LENGTH	245 mm
DIAMETER	122 mm
ACTUAL WEIGHT	3,7 kg

www.dynamicmixers.com

Dynamic - 518 rue Léo Baekeland BP57 - 85290 Mortagne sur Sèvre

Tél : +33 (0)2 51 63 02 72 • E-mail : contact@dynamicmixers.com

Follow us on social networks !



ACCESSORIES



CAPACITY	20 to 100 Liters
SHAFT LENGTH AC002.H	410 mm
SHAFT LENGTH AC002.HC	410 mm
SHAFT LENGTH AC500	500 mm
SHAFT LENGTH AC260.HC	300 mm
SPEED R.P.M.	3 000 / 10 500

CAPACITY	5 to 40 Liters
SHAFT LENGTH AC070	410 mm
SHAFT LENGTH AC265	300 mm
SPEED R.P.M.	3 000 / 10 500

CAPACITY	5 to 20 Liters
WHISKS LENGTH	245 mm
SPEED R.P.M.	300 / 900

CAPACITY	10 to 30 kg
SHAFT LENGTH	420 mm
SPEED R.P.M.	100 / 600

CAPACITY	20 to 200 Liters
SHAFTS LENGTH	420 / 600 / 700 mm
SPEED R.P.M.	100 / 600

CAPACITY	5 Liters
HEIGHT	600 mm
SPEED R.P.M.	400 / 1 500

STANDARD MOTOR BLOCK



Ref. : **AC001**

Mixer tools



M 410.H
Ref. : **AC002.H**



M 410.HC
Ref. : **AC002.HC**



M 500
Ref. : **AC500**



M 300 CC MASTER
Ref. : **AC260.HC**

Blender tools



BLENDER MASTER
Ref. : **AC070**



BLENDER CC MASTER
Ref. : **AC265**

Extractable whisks



Ref. : **AC003**

Ricer tool



Ref. : **AC004**

Master beater whisks FM420 / FM600 / FM700



Ref. : **AC202 / AC200 / AC201**

Bol Cutter Master with a selection of knives (standard or serrated)



Ref. : **AC055**

www.dynamicmixers.com

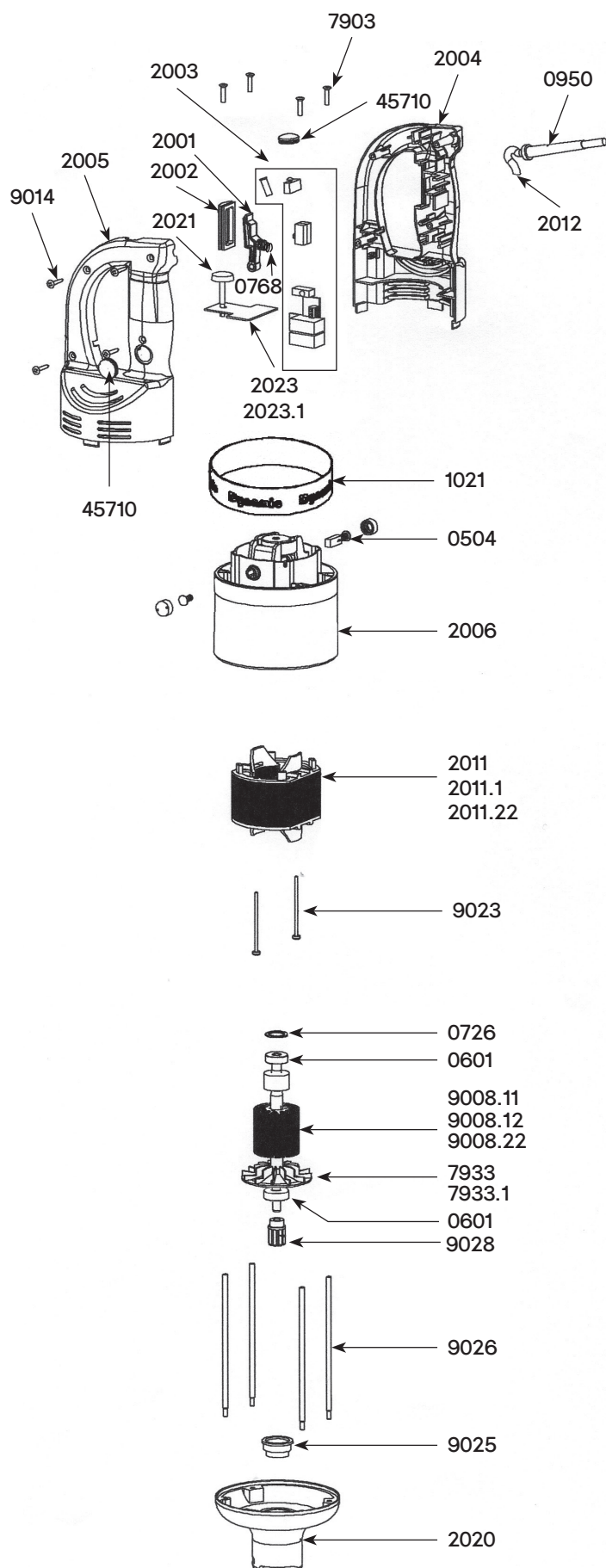
Dynamic - 518 rue Léo Baekeland BP57 - 85290 Mortagne sur Sèvre

Tél : +33 (0)2 51 63 02 72 • E-mail : contact@dynamicmixers.com

Follow us on social networks !



TECHNICAL SHEET

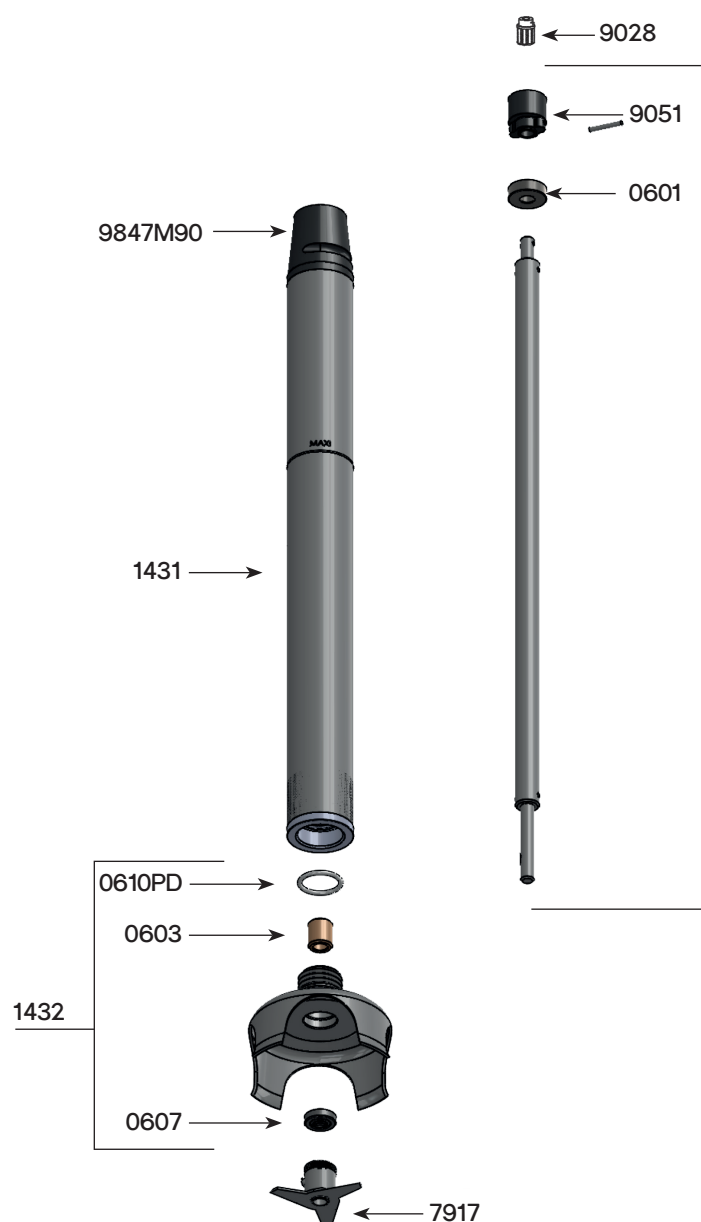


Parts list

Code

Carbon brushes (2)	0504
Ball bearing	0601
Squeezing washer	0726
Safety button return spring	0768
Strain relief 230 V	0950
Strain relief 115 V	0950.1
C.E.M. Filter	0999.20
Warning label	1017
Dynamic label	1021
ID label 230 V	1075
ID label 115 V	1076
Micro switch	1237
Power on indicator light 230 V	1241
Power on indicator light 115 V	1241.1
Control lever	2001
Control lever protector	2002
Circuit board 230 V (4 switches + capacitor)	2003
Circuit board 115 V (4 switches + capacitor)	2003.1
Half handle (button side)	2004
Half handle (label side)	2005
Motor housing brush holder	2006
Speed control plug	2008
Complete handle 230 V	2010
Complete handle 115 V	2010.1
Stator 230 V	2011
Stator 115 V	2011.1
Stator from n° 17/00001	2011.22
Power cord 230 V > 2002	2012
Power cord 115 V > 2002	2012.1
Power cord (UK) > 2002	2012.2
Power cord (Australia) > 2002	2012.3
Lower aluminum housing	2020
Speed variator knob	2021
Complete handle 230 V with variator (from N°040132)	2022
Complete handle 115 V with variator (from N°040132)	2022.1
Speed variator 230 V	2023
Speed Variator 115 V	2023.1
Brace screws (4)	7903
Fan	7933
Fan from n° 17/00001	7933.1
Rotor 115 V	9008.11
Rotor 230 V	9008.12
Rotor from n° 17/00001	9008.22
Power cord 230 V < 2002	9011
Handle screws (4)	9014
Field brace screws (2)	9023
Motor ball bearing sleeve	9025
Brace (4)	9026
Coupler for armature	9028
Power cord 115 V < 2002	9040
Carbon brush wires 230 V	9043
Power cord (Australia) < 2002	9066
Carbon brush wires 115 V	9143
Safety cover	45710

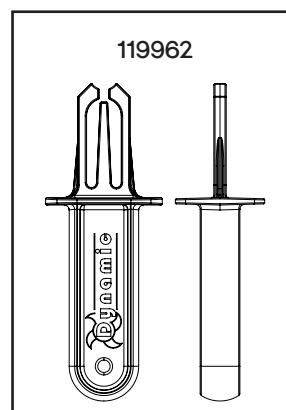
TECHNICAL SHEET



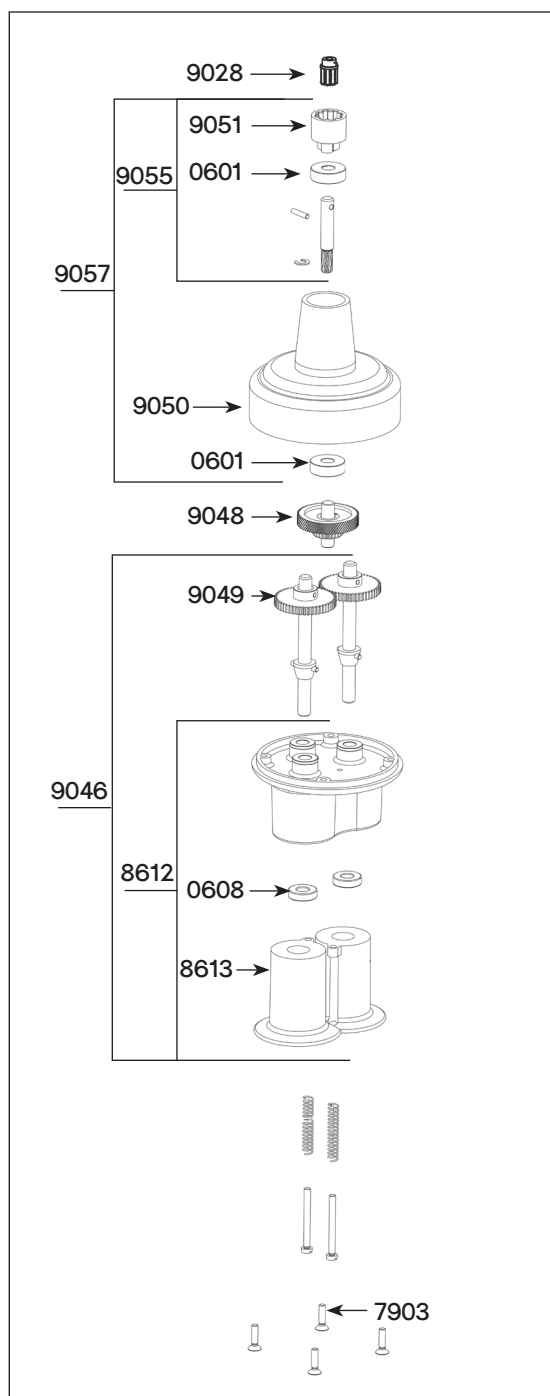
M 410.H - Ref AC002.H
(Complete attachment)

Parts list Code

Ball bearing	0601
Self-lubricating ring	0603
Waterproof seal	0607
O. ring	0610PD
Tube assembly + bearing	1431
Bell	1432
Cutter blade w/ screw	7917
Coupler for armature	9028
Shaft	9031
Coupling casing + pin	9051
Black tip	9847M90



TECHNICAL SHEET



WHISK MASTER - Ref AC003

Parts list	Code
Ball bearing	0601
Waterproof seal	0608
Pin 3 X 20	0744
Pin 3 X 14	0745
Brace screws (4)	7903
Holder + plastic ejector + seal	8612
Plastic ejector (pair)	8613
Whisk (Pair)	8615
Motor & shaft drive sprocket	9028
Reduction gear assembly	9034
Lower casing w/ o middle gear	9046
Central double gear & shaft	9048
Single gear (2)	9049
Upper plastic casing	9050
Coupling casing + pin	9051
Equipped upper shaft	9055
Complete upper casing	9057

